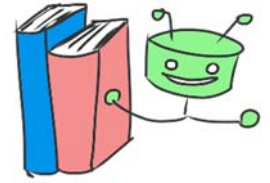


Name _____ **Poetry**



Characteristics of Poetry

DIRECTIONS: Read each description. Is it characteristics of poetry?
Circle YES or NO.

- | | | |
|---|-----|----|
| 1. economical or condensed use of words | YES | NO |
| 2. does not rhyme | YES | NO |
| can range in length from a sentence to works hundred of thousands of words | YES | NO |
| 3. long | | |
| 4. evokes an emotional response | YES | NO |
| can evoke a rational, logical, or emotional response | YES | NO |
| 5. | | |
| 6. follows a basic grammatical structure | YES | NO |
| 7. uses figurative language | YES | NO |
| 8. contains ordinary language | YES | NO |
| 9. often has rhythm and/or rhyme | YES | NO |
| the physical and grammatical arrangement of words can enhance the reader's overall experience | YES | NO |
| 10. | | |

