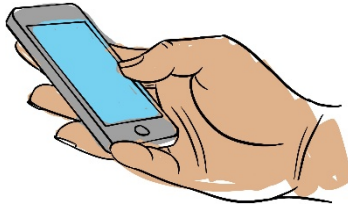


Name _____ **Tilde**

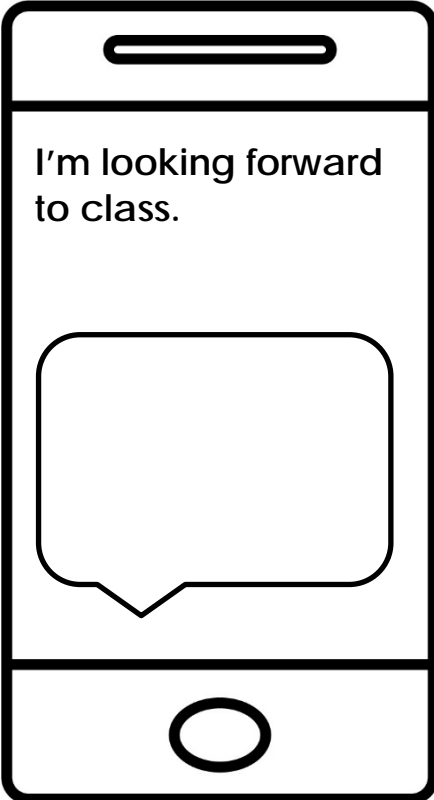


Tilde

One or more tildes can be used at the end of a sentence, for example in social media, to indicate that it should be understood as playful.

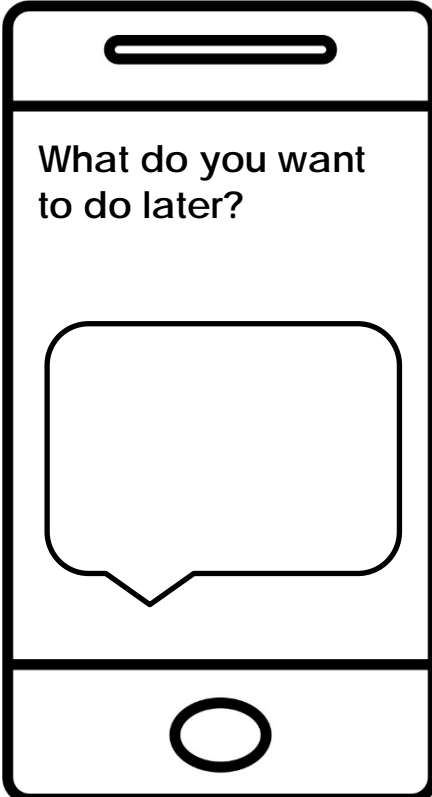
DIRECTIONS: Respond to each text with a sentence that should be understood as playful. Use the tilde.

1.

A simple line drawing of a smartphone screen. At the top is a horizontal slot for a camera. The screen displays the text "I'm looking forward to class." Below the text is a large, empty speech bubble shape with a tail pointing downwards. At the bottom of the screen is a circular home button.

I'm looking forward to class.

2.

A simple line drawing of a smartphone screen. At the top is a horizontal slot for a camera. The screen displays the text "What do you want to do later?" Below the text is a large, empty speech bubble shape with a tail pointing downwards. At the bottom of the screen is a circular home button.

What do you want to do later?