

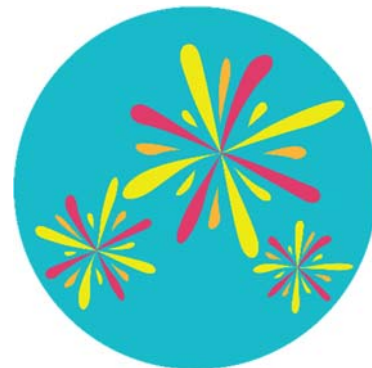
Name _____

Math Word Search

Abstract Algebra Clue Based Word Search

Directions: Find the words in the puzzle based on clues below.

V G W A B A E E T T W J B D R P F X G Q
M Y L B P Q Q P Q X T C A I I R G A M G
Z X S S N Q S W E X K X M D D L J S Z J
L W U V K K U J P N W A T I E T I S M K
I G Z N X Z B H O X R F T C M H N O L J
D I S O M O R P H I S M R W P O U C L L
O C M J O D I A U W K P R R O M K I B U
F J O L N L N M P G X S O F T O Q A M Z
K Q Q M O Q G W S Y W M R N E M E T U Y
N S M C M N I B S G O Z R G N O J I F F
N W H T O U Q A K T G U Z V C R S V D X
O W H Q R N T B U O L Q R H E P L I H E
Q Z J M P Q U A S I G R O U P H M T S J
V G L D H Y D L T S C S P X U I R Y D K
Q W D R I C F P L I F S G P V S Q I G K
O T Q V S M P Y C T V N Y R N M M M N O
S Q J B M G P Q Z E P I M O R P H I S M
Y F X W W M J J N F Y N T O D G F O J S
R U S F T B G X S W J I D Y Z W O J B F
W A O H A H N A A P J E M X X Z F F Z D



- Isomorphism - A bijective structure-preserving map between two algebraic systems that demonstrates their equivalence in terms of operations and properties.
- Homomorphism - A function between algebraic structures that maintains the operational consistency of the systems involved.
- Epimorphism - A structure-respecting function that is surjective, connecting two systems in a way that ensures every element of the target is related.
- Monomorphism - A function preserving structure that is injective, reflecting uniqueness of the mappings between systems.
- Automorphism - A self-referential structure-preserving map that retains all characteristics within the same system.
- Quasigroup - A set with a binary operation where division-like solutions are always uniquely determined.
- Subring - A subset of a larger structure that is closed under the inherited operations and retains key properties.
- Commutativity - A property of an operation where the result remains unchanged regardless of the sequence of elements.
- Associativity - A characteristic of operations where grouping of elements does not affect the outcome.
- Idempotence - A property of certain operations where repeated application yields the same result.

