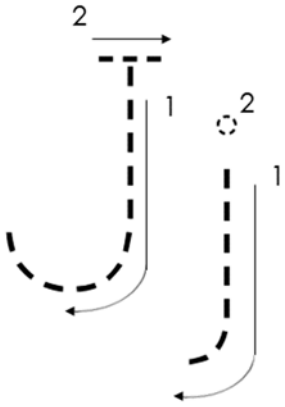
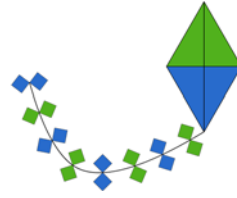
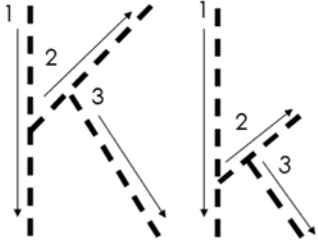


Name \_\_\_\_\_ Consonants

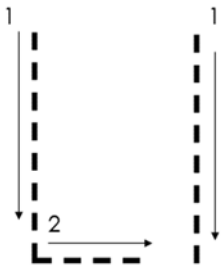
# J K L



Handwriting practice lines for uppercase J and lowercase j. Each letter is shown once as a dotted line for tracing and once as a solid line for independent practice. The lines consist of a top solid line, a middle dashed line, and a bottom solid line.



Handwriting practice lines for uppercase K and lowercase k. Each letter is shown once as a dotted line for tracing and once as a solid line for independent practice. The lines consist of a top solid line, a middle dashed line, and a bottom solid line.



Handwriting practice lines for uppercase L and lowercase l. Each letter is shown once as a dotted line for tracing and once as a solid line for independent practice. The lines consist of a top solid line, a middle dashed line, and a bottom solid line.