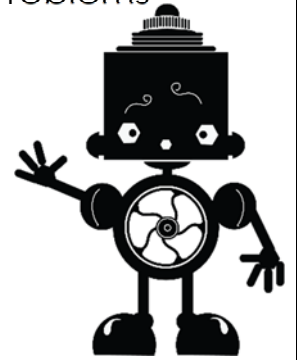


Name _____

Division Word Problems



1. In a robotics competition, there are 420 participants. If they are divided into 14 teams with an equal number of participants on each team, how many participants will be on each team?
2. A factory produced 360 electronic gadgets in a day. If they want to pack them into boxes with an equal number of gadgets in each box and they have 12 boxes, how many gadgets will be in each box?
3. A charity organization received a donation of 480 blankets. If they want to distribute them equally among 8 shelters with the same number of blankets in each shelter, how many blankets will each shelter receive?
4. A bookstore has 300 fantasy novels to display. If they want to arrange them on shelves with an equal number of novels on each shelf and they have 15 shelves, how many novels will be on each shelf?
5. A music festival has 540 tickets available for sale. If they want to sell them in bundles with an equal number of tickets in each bundle and they have 18 bundles, how many tickets will be in each bundle?
6. A zoo has 600 visitors on a busy day. If they want to divide them equally into 20 guided tour groups with the same number of visitors in each group, how many visitors will be in each group?
7. A bakery baked 480 loaves of bread for a fundraising event. If they want to distribute them equally among 12 volunteers with the same number of loaves for each volunteer, how many loaves will each volunteer receive?
8. A construction site received a shipment of 420 bricks. If they want to distribute them equally among 14 workers with the same number of bricks for each worker, how many bricks will each worker receive?
9. A sports store has 300 basketballs in stock. If they want to pack them into crates with an equal number of basketballs in each crate and they have 15 crates, how many basketballs will be in each crate?
10. A school cafeteria made 540 sandwiches for lunch. If they want to distribute them equally among 18 classrooms with the same number of sandwiches for each classroom, how many sandwiches will each classroom receive?

