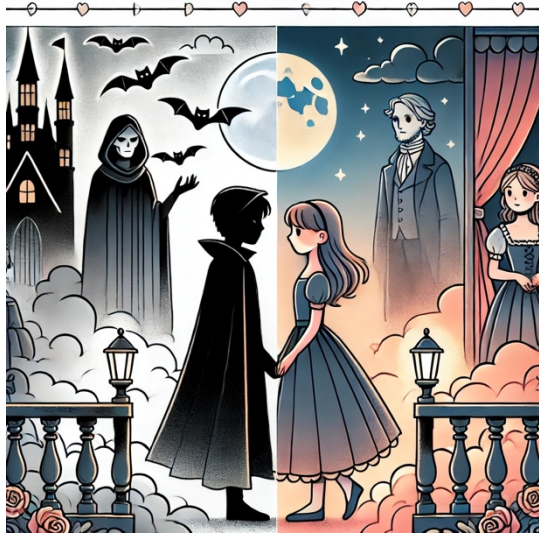


Name _____



Love and Legends

Twilight by Stephenie Meyer is a mix of romance and supernatural elements, much like classic novels of the past. It tells the story of Bella Swan, a human girl who falls in love with Edward Cullen, a vampire. This type of story—where love faces great challenges—has been a theme in literature for centuries.

One classic romance novel that *Twilight* can be compared to is *Romeo and Juliet* by William Shakespeare. In both stories, two people from different worlds fall in love, despite the risks. Just as Romeo and Juliet's families are enemies, vampires and werewolves in *Twilight* are natural rivals. Bella and Edward's love, like Romeo and Juliet's, is full of obstacles and danger.

Another comparison can be made to *Dracula* by Bram Stoker. *Dracula* is one of the earliest vampire novels and portrays vampires as terrifying monsters who prey on humans. In contrast, *Twilight* changes the idea of vampires by making them more human. Edward and his family choose not to drink human blood, showing that vampires can have emotions and self-control.

Unlike older supernatural stories that focus on fear, *Twilight* adds romance and personal choices. Many classic novels feature characters who must escape a terrible fate, while Bella chooses her fate willingly. She embraces Edward's world instead of running from it.

Though *Twilight* follows the tradition of supernatural and romantic fiction, it brings a fresh perspective. It combines elements of classic love stories with a modern twist, making it different from both *Romeo and Juliet* and *Dracula*. By mixing danger, love, and mystery, *Twilight* creates a unique story that continues to capture the imagination of readers today.