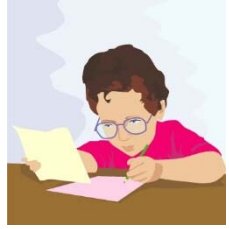


Name \_\_\_\_\_ **Chiasmus**

# Chiasmus



1. Chiasmus is a literary device in which the grammar of one phrase is inverted in the phrase that follows, so two key concepts from the original phrase reappear in the second phrase in inverted order. True False
2. Chiasmus has a parallel and "crisscrossed" structure. True False
3. All chiasmus is antimetabole. True False
4. All antimetabole are chiasmus. True False
5. In chiasmus, the same words are always repeated in inverse order in both sides of the grammatical structure. True False
6. In antimetabole, it is the concepts, not the exact words, that are repeated. True False
7. Chiasmus is often confused with antithesis. True False
8. Chiasmus is asymmetrical. True False
9. The word "chiasmus" comes from a Greek word that means "crossed." True False
10. Chiasmus creates a lyrical effect. True False