

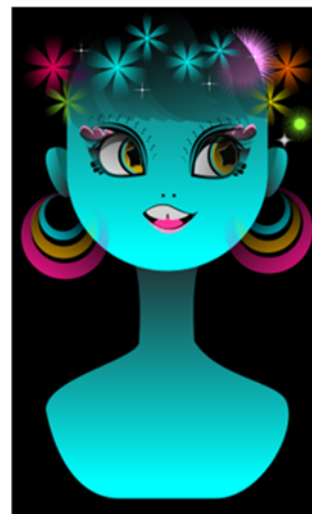
Name _____

Element Word Search

Noble Gases Clue Based Word Search

Directions: Find the words in the puzzle based on clues below.

X T N D U X Z J G J Z R R E C R O Y S D
S E F D H K E K L K N L B B M A D X D A
S E D L E B Q L V B E R Z R B L T O K V
J T P X V V O P Q S B X O R U S K O A T
Y G U T P K T O U A P S C M S B T G C G
I Q Q M A S T M Z E Z Q W I S U M P P Z
A M B G U O B Z P W Q A L I M I S D H U
U A W Y U K U J S A S G L D H E K C U G
J W X Y T D P I D N I O A Q E V R V Z E
N H W Z F I Y X P E X E O G N M Y U R L
X V G S I L G H B D A B G C Q I P H A Y
G Y N X R Q U G Z E G J A B A N T W D T
Y A S L E V P R D E Y V N N H I O O O O
W I H N G N F E L M I H E A X E N O N X
A C M E I S I P O M B C S Y F O L E O L
V K M P R M T T L A Q F S T E V G I R Z
V O P U D C M Q E A R G O N W G H V U T
F K I I Q T Q B W R S I N K G I L O D M
Y M H N G O J L L J I M T H T L F Y O P
H X C B Q Y Z X H J W T A B C B X T Z I



- A lightweight, colorless gas commonly used in balloons and as a coolant due to its low boiling point.
- A bright, glowing gas frequently used in illuminated signs and lighting applications.
- A stable, colorless gas often utilized as a shielding medium in welding and high-temperature processes.
- A rare gas employed in high-performance lighting and specialized imaging systems.
- A dense, colorless gas used in high-intensity lamps and as a general anesthetic in some medical procedures.
- A radioactive gas naturally emanating from the ground, associated with potential health risks in enclosed spaces.
- A synthetic, highly unstable element at the edge of the periodic table, with limited practical applications due to its short lifespan.
- A transient molecular complex that emits ultraviolet light, commonly used in laser technology.
- A state of matter consisting of ionized particles, often created when these elements are subjected to electrical discharge.
- A property describing the reluctance of these gases to participate in chemical reactions under standard conditions.

