

Name \_\_\_\_\_

## The Divine Touch: The Creation of Adam by Michelangelo

Michelangelo's "The Creation of Adam" is a masterpiece that graces the ceiling of the Sistine Chapel in Vatican City. This iconic painting captures a moment of profound significance, showcasing the divine act of giving life to humanity. Let's explore the details, history, and symbolism of "The Creation of Adam."



### The Painting: A Divine Encounter

"The Creation of Adam" is one of the most famous frescoes painted by Michelangelo. Created between 1508 and 1512, it is part of a larger series of frescoes that adorn the ceiling of the Sistine Chapel. The painting depicts the biblical account of God breathing life into Adam, the first man.

### The Composition

The central focus of the painting is the meeting of God and Adam. They are surrounded by a sweeping drapery of angels and other figures. God, with outstretched arm, reaches out to Adam, who reclines on a rocky outcrop.

### The Iconic Touch

The defining moment of the painting is the touch between God's finger and Adam's. Their hands almost touch, conveying the divine act of bestowing life upon humanity. The spark of life is visualized through the almost-contact between their fingertips.

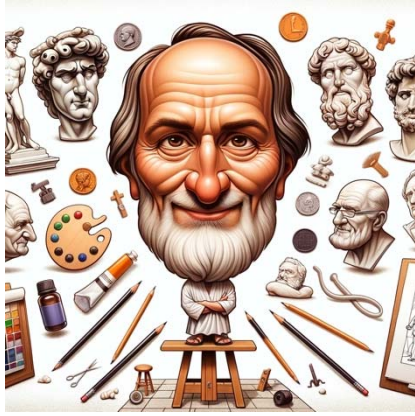
### The Depiction of God and Adam

God is depicted as a bearded, elderly figure with flowing robes, while Adam is portrayed as a young and muscular man. The contrast between the aged wisdom of God and the youthful potential of Adam is a powerful element in the painting.

### The Sistine Chapel Ceiling

"The Creation of Adam" is just one of several panels on the Sistine Chapel ceiling that depict scenes from the Book of Genesis. Michelangelo's work on this grand

Name \_\_\_\_\_



project was commissioned by Pope Julius II and is considered one of the greatest achievements in Western art.

### **The Meaning and Symbolism**

The painting is rich in symbolism and theological significance. It symbolizes the moment when God granted humanity the divine gift of life and the potential for free will and reason. It also emphasizes the idea of the human soul's connection to the divine.

### **The Awe-Inspiring Setting**

Visitors to the Sistine Chapel are often overwhelmed by the sheer scale and grandeur of Michelangelo's masterpiece. The painting is set against a backdrop of vibrant blue and gold, creating a celestial atmosphere that complements the divine theme.

### **The Mystery of God's Creation**

"The Creation of Adam" has sparked numerous interpretations and discussions over the years. Some scholars suggest that the surrounding figures and shapes in the composition form a brain, hinting at the idea of divine intellect and the gift of knowledge to humanity.

### **The Restoration Efforts**

In recent decades, the painting underwent extensive restoration to remove centuries of accumulated grime and dirt. This restoration revealed the vibrant colors and intricate details that Michelangelo originally intended, enhancing the painting's impact.

### **Legacy and Influence**

"The Creation of Adam" has had a profound influence on art, culture, and popular imagination. It continues to be a symbol of human potential and the divine connection, inspiring countless artists and thinkers throughout history.

### **Location and Accessibility**

"The Creation of Adam" remains on the ceiling of the Sistine Chapel in Vatican City. It can be viewed by visitors to the chapel, although access may be limited during religious ceremonies and events.

