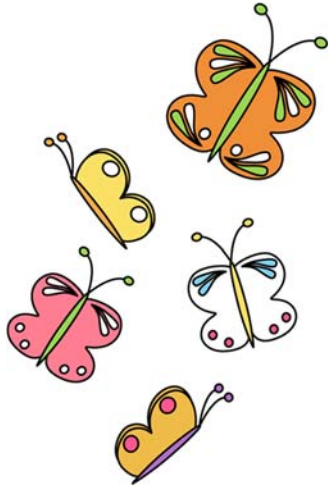


Name \_\_\_\_\_

## Wings Across Continents: The Marvel of Butterfly Migration



Butterflies are known for their graceful flight and vibrant colors, but did you know that some species undertake incredible journeys across continents? Migration is a fascinating behavior observed in several butterfly species, and understanding how and why butterflies migrate can unlock the secrets of their remarkable journeys.

Migration is the seasonal movement of animals from one area to another, often in search of better resources or breeding grounds. In the case of butterflies, migration typically involves long-distance flights between breeding and overwintering sites. One of the most famous examples of butterfly migration is the journey of the monarch butterfly.

Monarch butterflies are perhaps the most well-known migratory butterflies, traveling thousands of miles between their breeding grounds in North America and their overwintering sites in central Mexico. The monarch migration is an awe-inspiring spectacle, with millions of butterflies embarking on this epic journey each year.

But how do butterflies navigate such vast distances? While scientists are still unraveling the mysteries of butterfly migration, several factors are believed to play a role. Environmental cues such as temperature, daylight, and geomagnetic fields may help guide butterflies along their migratory routes. Additionally, monarch butterflies are thought to use a combination of visual landmarks and innate orientation mechanisms to navigate their way to their destination.

The timing of butterfly migration is closely tied to seasonal changes in temperature and daylight. In the fall, as temperatures cool and daylight hours decrease, monarch butterflies in North America begin their southward migration to Mexico. They travel hundreds or even thousands of miles, relying on favorable winds to assist them on their journey.

Once they reach their overwintering sites in Mexico, monarch butterflies gather in dense clusters in oyamel fir forests, where they spend the winter months in a state of dormancy. In the spring, as temperatures warm and daylight hours increase, the monarchs begin their northward journey back to their breeding grounds, where they lay their eggs and start the cycle anew.

Butterfly migration is not limited to monarchs; other species, such as painted ladies and red admirals, also undertake impressive journeys across continents. These migrations are essential for maintaining healthy populations and genetic diversity within butterfly species.

In summary, butterfly migration is a remarkable phenomenon that showcases the incredible abilities of these delicate insects. By unraveling the mysteries of butterfly migration, scientists can gain valuable insights into the ecological processes that shape our planet.