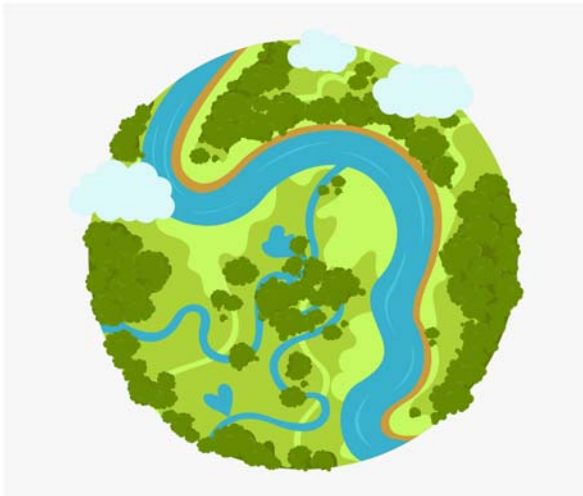


Name \_\_\_\_\_

## Vanishing Homes: The Impact of Habitat Loss on Biodiversity



Habitat loss is like pieces of a puzzle being taken away, leaving fewer and fewer places for species to live and thrive. Imagine a bustling forest filled with tall trees, vibrant flowers, and a symphony of bird songs. Now, picture bulldozers tearing through this forest, clearing the land to make way for roads, buildings, and farms. This destruction of natural habitats is what we call habitat loss, and it's one of the biggest threats to biodiversity worldwide. But how does habitat loss contribute to biodiversity loss? Let's delve into the reasons.

Firstly, habitats are like homes for plants, animals, and other organisms. Just as we need a house to live in, each species requires a specific type of habitat to survive. For example, a panda relies on bamboo forests for food and shelter, while a frog needs a wetland habitat for breeding and feeding. When habitats disappear, species lose their homes and may struggle to find suitable alternatives, leading to declines in populations and, in some cases, extinction.

Moreover, habitat loss fragments ecosystems into smaller, isolated patches, making it harder for species to move, find mates, and access resources. Imagine if your neighborhood suddenly became divided by highways and skyscrapers, making it challenging to visit friends, find groceries, or go to school. Similarly, habitat fragmentation disrupts ecological processes like pollination, seed dispersal, and predator-prey interactions, which are vital for maintaining healthy ecosystems.

Furthermore, habitat loss often goes hand in hand with other human activities like deforestation, urbanization, agriculture, and mining, which can exacerbate its effects on biodiversity. For instance, deforestation not only destroys habitats but also releases carbon dioxide into the atmosphere, contributing to climate change and further threatening biodiversity. Similarly, urbanization replaces natural habitats with buildings and pavement, reducing green spaces and displacing wildlife.

In summary, habitat loss is a major driver of biodiversity loss, threatening the survival of countless species and disrupting ecosystems around the world. By understanding the causes and consequences of habitat loss, we can take action to protect and restore habitats, preserving the rich tapestry of life on Earth for future generations.