

Name _____

Exploring Literary Devices in The Scarlet Letter

Nathaniel Hawthorne's "The Scarlet Letter" is a literary masterpiece that utilizes various literary devices to enhance the storytelling and convey its themes and messages. Let's delve into the world of this classic novel and explore some of the literary devices employed by the author.

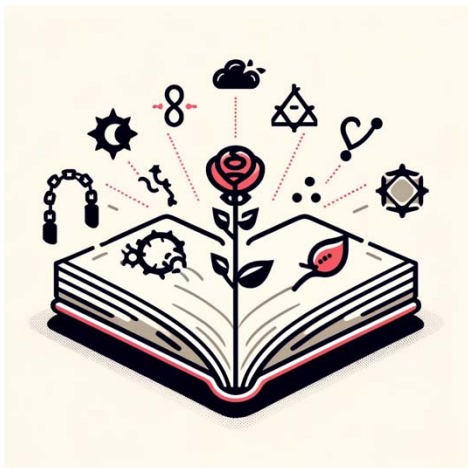


- **Symbolism:** One of the most prominent literary devices in "The Scarlet Letter" is symbolism. Hawthorne uses symbols to represent deeper themes and ideas. For example, the scarlet letter "A" worn by Hester Prynne symbolizes her sin of adultery, but it also comes to represent her strength and resilience in the face of societal judgment.
- **Foreshadowing:** Hawthorne employs foreshadowing throughout the novel to hint at future events. Early in the story, we see hints of the fates of certain characters, creating a sense of anticipation and tension. For example, the appearance of Roger Chillingworth foreshadows his role in the unfolding drama.
- **Irony:** Irony is used to convey the disconnect between appearance and reality. One example of irony in the novel is Reverend Arthur Dimmesdale's position as a revered clergyman while secretly wrestling with guilt and sin. This dramatic irony adds depth to the narrative and highlights the hypocrisy of the Puritan society.
- **Allusion:** Hawthorne makes use of literary and historical allusions to provide context and depth to the story. References to the Bible and historical events enrich the narrative and enhance the reader's understanding of the characters and their actions.
- **Imagery:** Hawthorne's use of vivid imagery helps readers visualize the scenes and settings in the novel. His detailed descriptions of the Puritan

Name _____

town, the scaffold, and the forest create a rich and immersive reading experience.

- **Allegory:** "The Scarlet Letter" can be seen as an allegory, where the characters and events symbolize abstract ideas and moral concepts. For example, Hester Prynne can be viewed as a symbol of individualism and resilience, while the scarlet letter represents the consequences of societal judgment.
- **Motif:** Motifs are recurring elements or themes that contribute to the novel's overall message. In "The Scarlet Letter," one prominent motif is the use of light and darkness. Light often symbolizes truth and revelation, while darkness represents secrecy and hidden sin.
- **Tone:** The tone of the novel, characterized by its somber and introspective quality, reflects the moral seriousness of the Puritan society and the moral dilemmas faced by the characters.



- **Parallelism:** Parallelism is evident in the structure of the novel, with certain events and characters mirroring one another. For instance, the relationship between Hester Prynne and Pearl parallels the relationship between Dimmesdale and Chillingworth, highlighting the consequences of secret sin.
- **Metaphor:** Metaphors are used to create vivid comparisons and enhance the reader's understanding. For example, the scarlet letter "A" is metaphorically described as having the power to transform Hester Prynne from a sinner to a saint.