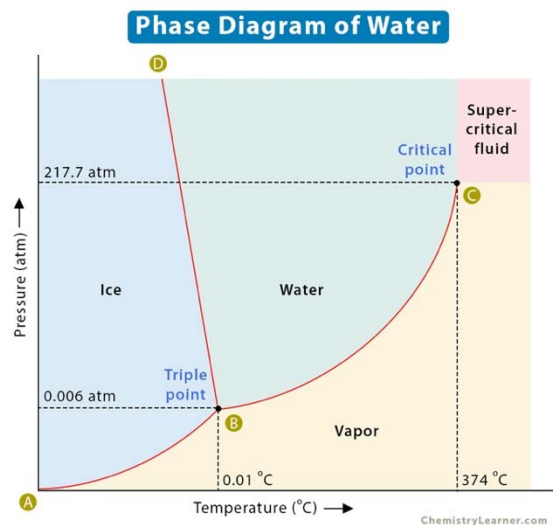


Name \_\_\_\_\_

## Unlocking the Mystery of Phase Diagrams: Your Guide to Understanding Matter's Phases



Have you ever wondered how scientists understand the behavior of different substances as they change from one phase to another? The answer lies in a remarkable tool called a phase diagram. Join us as we delve into the world of phase diagrams, discover how they represent phase transitions, and unravel the significance of the elusive triple point.

### What Is a Phase Diagram?

Imagine trying to map out all the possible states of matter for a substance, including solid, liquid, and gas, under different conditions of temperature and pressure. That's where a phase diagram comes into play. It's like a treasure map for scientists, helping them navigate the complexities of matter's behavior.

A phase diagram is a graphical representation that shows the relationships between a substance's phase (solid, liquid, gas) and its temperature and pressure. By studying these diagrams, scientists can predict the conditions under which matter will change from one phase to another.

### The Components of a Phase Diagram

Phase diagrams consist of several key elements:

- **Axes:** A phase diagram has two axes—a horizontal axis representing temperature and a vertical axis representing pressure. These axes allow scientists to pinpoint specific conditions.
- **Phases:** The phases of matter—solid, liquid, and gas—are typically represented as regions or areas on the diagram.
- **Phase Boundaries:** Lines or curves on the diagram separate the regions of different phases. These boundaries show the conditions at which phase transitions occur.
- **Triple Point:** The most intriguing point on a phase diagram is the triple point, represented by a unique symbol. This is a point at which all three phases of matter (solid, liquid, and gas) coexist in equilibrium. It's a bit like magic, and we'll explore it further in a moment.



Name \_\_\_\_\_

## Representing Phase Transitions

One of the primary purposes of a phase diagram is to depict how matter transforms from one phase to another as temperature and pressure change. Here's a brief overview of how this representation works:

- **Solid to Liquid (Melting):** As you move from left to right on a phase diagram (increasing temperature), you cross the boundary between the solid and liquid regions. This transition represents the melting of a substance.
- **Liquid to Gas (Boiling):** Going up on the phase diagram (increasing pressure) can also lead to phase transitions. If you cross the boundary between the liquid and gas regions, you encounter the conditions for boiling.
- **Solid to Gas (Sublimation):** In some cases, substances can transition directly from a solid to a gas without passing through the liquid phase. This is represented when you move from the solid region to the gas region on the phase diagram.

## The Mysterious Triple Point

Now, let's shine a spotlight on the enigmatic triple point. This is a point on the phase diagram where all three phases of matter—solid, liquid, and gas—coexist in perfect balance. It's like a cosmic equilibrium that occurs at a specific combination of temperature and pressure unique to each substance.

The triple point is a fundamental reference point in science. It defines the precise conditions at which a substance can exist in all three phases simultaneously. For example, the triple point of water is at 0.01 degrees Celsius (32.018 degrees Fahrenheit) and a pressure of 611.657 pascals (0.00604 atmospheres). At this point, you can find ice, liquid water, and water vapor all coexisting harmoniously.

## Why Is the Triple Point Important?

The triple point is not just a fascinating curiosity; it serves as a crucial reference for calibrating thermometers. Since the triple point of water is precisely defined, it provides a reliable and consistent reference for measuring temperature accurately. This has significant implications in fields such as chemistry, physics, and industry, where precise temperature measurements are essential.

Additionally, the triple point aids scientists in understanding and studying phase transitions, helping them create accurate phase diagrams for various substances.

