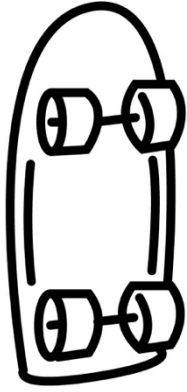


Name _____



Skateboard Anatomy: Exploring the Building Blocks of a Thrilling Ride

Have you ever wondered what goes into making a skateboard and how each component contributes to the ultimate skating experience? Skateboarding is more than just a board with wheels; it's a finely tuned machine with various parts that work together seamlessly. In this article, we'll dive into the basic components of a skateboard and uncover their functions.

The Skateboard Deck

The deck is the flat, rectangular part of the skateboard that you stand on. It's usually made of layers of maple wood, though other materials like bamboo and carbon fiber are also used. The deck's size and shape can vary, and it plays a crucial role in your riding experience.

- **Size and Shape:** Skateboard decks come in different sizes and shapes. The width and length of the deck can affect stability, balance, and the type of tricks you can perform. Wider decks provide more stability, while narrower ones are more agile for tricks like flips and spins.
- **Grip Tape:** The top surface of the deck is covered with grip tape, a rough, sandpaper-like material. Grip tape provides traction for your shoes, allowing you to control the board and perform tricks with precision.

Trucks

Trucks are the metal components mounted underneath the skateboard deck. They consist of several parts, including the baseplate, hanger, and kingpin. Trucks play a vital role in steering and maneuverability.

Steering and Stability: Trucks are essential for turning and maintaining balance while riding. The kingpin's tightness determines how easily the board can turn. Loose trucks offer a more responsive ride, while tight trucks provide stability.

Wheels

Wheels are what make a skateboard roll. They come in various sizes, durometers (hardness levels), and shapes, and each aspect affects your ride differently.

- **Size:** The size of the wheels influences how smooth or rough your ride feels. Larger wheels roll over cracks and obstacles more easily, providing a smoother ride. Smaller wheels are more agile and suitable for tricks.
- **Durometer:** Wheel durometer is a measurement of hardness. Softer wheels (lower durometer) provide better grip, ideal for cruising and carving. Harder wheels (higher durometer) are better for sliding and tricks.



Name _____

Bearings

Bearings are small, round components placed inside the wheel hubs. They allow the wheels to spin freely and smoothly.

Smooth Ride: Bearings reduce friction between the wheel and the axle, ensuring that the wheels spin efficiently. High-quality bearings provide a smoother and faster ride.

Hardware

Skateboard hardware includes screws, nuts, and bolts that hold the trucks securely to the deck.

Secure Assembly: Hardware ensures that all the components are firmly attached to the skateboard, preventing accidents and maintaining the board's integrity.

Bushings

Bushings are small, rubbery components inside the trucks that affect how easily the board turns.

Turning Control: Bushings come in different hardness levels and shapes, allowing you to fine-tune your trucks' responsiveness. Softer bushings make turning easier, while harder ones provide stability at high speeds.

Risers

Risers are plastic or rubber pads placed between the deck and the trucks. They add extra height to the skateboard.

Avoid Wheel Bite: Risers prevent "wheel bite," which occurs when the wheels touch the deck while turning sharply. They create space between the wheels and the deck, allowing for smoother turns.

Now that you've explored the basic components of a skateboard and their functions, you can better understand how each part contributes to the overall riding experience. Whether you're cruising down the street or perfecting your tricks at the skatepark, the synergy of these components makes skateboarding the thrilling sport it is.

