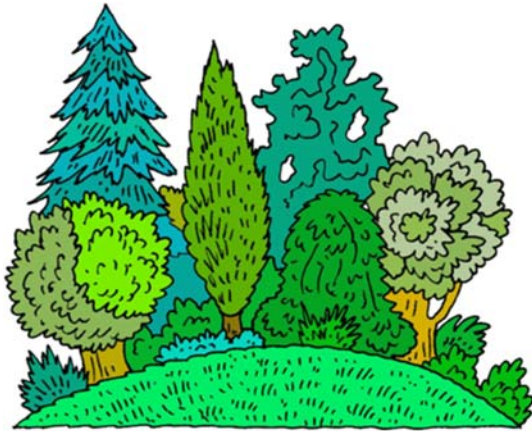


Name _____

Pando Grove: Nature's Epic Superorganism



Deep in the heart of Fishlake National Forest in Utah, there exists a magical forest that has captured the imagination of many. This enchanting place is known as the Pando Grove, and it's more than just a collection of trees; it's a natural wonder and a testament to the resilience of life.

Pando is often referred to as the "Trembling Giant" because it appears to consist of a dense grove of quaking aspen trees. However, what makes Pando truly remarkable is the fact that it's not a collection of individual trees but a single, massive organism connected by a vast underground root system. In fact, it's considered one of the oldest and heaviest living organisms on Earth.

The story of Pando began thousands of years ago when a single aspen tree sprouted. Over the centuries, it sent out countless shoots, creating an extensive network of genetically identical trees connected by their roots. This interconnected system allows the grove to share resources, ensuring its survival through harsh environmental conditions.

In the fall, Pando dazzles visitors with its golden leaves, creating a breathtaking spectacle. Each year, its interconnected trees send nutrients and water to support one another, resulting in a synchronized display of autumn colors.

Despite its age and size, Pando faces challenges such as human activity and changing environmental conditions. Conservation efforts are underway to protect and preserve this natural wonder for future generations to enjoy.

Pando Grove serves as a reminder of the incredible diversity and resilience of life on our planet. It shows us that even in the face of adversity, nature finds a way to thrive and amaze us with its beauty.