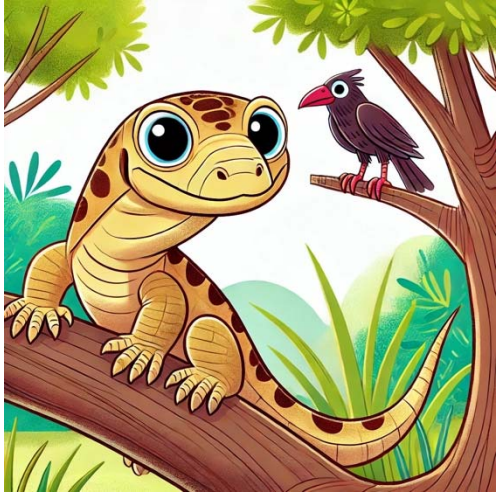


Name \_\_\_\_\_



### Komodo Dragon Predators and Threats

Komodo dragons are among the top predators in their natural habitat, but they still face threats and dangers in the wild. As powerful carnivores, adult Komodo dragons have very few natural predators. However, young Komodo dragons are vulnerable to a variety of dangers. Birds of prey, snakes, and

even adult Komodo dragons may hunt the younger ones.

Besides predators, Komodo dragons face threats from environmental changes. Habitat loss due to human development can reduce their living space, making it harder for them to find food and shelter. Human activities like deforestation and tourism can disrupt their natural habitats, putting their population at risk.

Diseases and parasites also pose dangers to Komodo dragons. Bacterial infections and parasites can affect their health, reducing their ability to hunt and stay strong. Despite these risks, Komodo dragons have a strong immune system that helps them resist many diseases.

One way Komodo dragons stay healthy in the wild is through their diet. They are carnivores and often consume entire animals, including bones and organs, which provides them with important nutrients. Additionally, their saliva contains bacteria that can kill prey but rarely harms the dragon itself.

To protect Komodo dragons, wildlife conservation efforts are important. National parks and reserves in Indonesia help safeguard their habitats, ensuring these fascinating reptiles can continue to thrive in the wild.