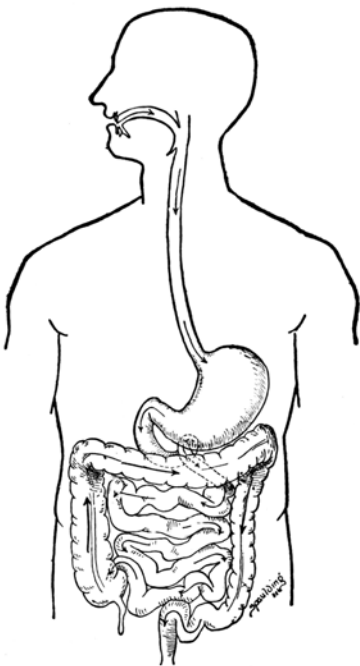


Name _____



The Journey of Waste: What Happens to Waste Products After Digestion

Have you ever wondered what happens to the waste products your body generates after digesting food? Digestion is a complex process that transforms the food you eat into nutrients your body can use. But not everything in your food can be absorbed and utilized, and that's where waste comes in. Let's take a journey through your body to explore what happens to waste products after digestion.

The Role of the Large Intestine

Once the nutrients have been absorbed in the small intestine, what's left behind is a mixture of undigested food, bacteria, cells shed from the lining of the digestive tract, and other waste products. This mixture enters the large intestine, also known as the colon.

Absorption of Water and Electrolytes

In the large intestine, the primary focus is on reabsorbing water and electrolytes (like sodium and potassium) from the waste material. This process helps to thicken the waste and turn it into a semi-solid substance known as stool or feces. The reabsorption of water is crucial for maintaining the body's overall water balance.

Beneficial Bacteria

Your large intestine is also home to trillions of beneficial bacteria that play an essential role in digestion. These bacteria help break down some of the remaining substances, particularly complex carbohydrates and fiber, which the human body cannot digest on its own. In return, these bacteria get a cozy home and a source of nutrition from the undigested food.

Formation of Stool

As the waste material moves through the large intestine, it undergoes a transformation. Water is progressively absorbed, and the mixture becomes more solid. The beneficial bacteria in your colon contribute to this process by fermenting some of the undigested carbohydrates, producing gases, and further breaking down the material.



Name _____

Storage in the Rectum

Once the stool has undergone these changes in the large intestine, it is stored in the rectum, which is the final section of the digestive tract. The rectum serves as a temporary holding area for stool until it is ready to be eliminated from the body.

The Final Journey: Elimination

When the rectum is full, it triggers the urge to have a bowel movement. At this point, your body is ready to eliminate the waste. The stool moves through the rectum and into the anus, which is the opening at the end of the digestive tract. Muscles in the walls of the anus relax, allowing the stool to be expelled from the body.

The Importance of Regular Elimination

Regular bowel movements are essential for overall health. They help remove waste and toxins from your body and prevent the buildup of harmful substances. Constipation, which is the opposite of regular elimination, can lead to discomfort and health issues, so it's important to maintain a balanced diet with plenty of fiber, fluids, and regular physical activity to support healthy digestion and elimination.

Recycling Nutrients

While not all waste is suitable for recycling, some of it can be repurposed by nature. For example, when animal waste breaks down in the environment, it can contribute nutrients to the soil, benefiting plants and the ecosystem as a whole.

The journey of waste products after digestion is an important part of the digestive process and contributes to overall health. While it may not be as glamorous as the absorption of nutrients, the efficient elimination of waste ensures that your body remains clean and toxin-free. So, the next time you think about digestion, remember that it's not just about what your body absorbs but also about what it efficiently disposes of.

