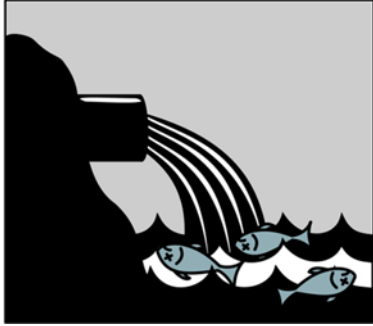


Name _____



The Dirty Truth: Exploring the Role of Sewage and Wastewater in Water Pollution

Sewage and wastewater are byproducts of human activities, containing a mixture of organic and inorganic substances that can pose significant threats to water quality. Despite efforts to treat and manage these wastes, they remain major contributors to water pollution worldwide.

Sources of Sewage and Wastewater

Sewage and wastewater originate from various sources, including residential, commercial, and industrial activities. Household sewage, for example, contains human waste, detergents, and chemicals from cleaning products, while industrial wastewater can contain pollutants such as heavy metals, oils, and toxic chemicals.

Contaminants in Sewage and Wastewater

Sewage and wastewater carry a range of contaminants that can degrade water quality and harm aquatic ecosystems. Pathogens like bacteria, viruses, and parasites present in sewage can cause waterborne diseases, posing risks to human health and aquatic life. Additionally, nutrients such as nitrogen and phosphorus from wastewater can lead to nutrient pollution, fueling algal blooms and oxygen depletion in water bodies.

Impact on Aquatic Ecosystems

When sewage and wastewater are discharged untreated into water bodies, they can have detrimental effects on aquatic ecosystems. Excessive nutrient levels can promote the growth of algae, which can smother aquatic plants, block sunlight, and deplete oxygen levels, leading to fish kills and habitat degradation. Chemical pollutants in sewage and wastewater can also bioaccumulate in aquatic organisms, posing risks to higher trophic levels, including humans who consume contaminated seafood.

Water Treatment Challenges

While wastewater treatment plants are designed to remove pollutants and pathogens from sewage, they may not always be effective in fully treating all contaminants. Aging infrastructure, inadequate treatment processes, and limited resources can hinder the ability of treatment facilities to adequately treat sewage and wastewater before discharge, increasing the risk of water pollution.

Role of Public Awareness and Action

Raising public awareness about the importance of proper sewage and wastewater management is crucial for addressing water pollution. By promoting water conservation, responsible waste disposal practices, and investment in wastewater treatment infrastructure, communities can help minimize the impact of sewage and wastewater on water quality and protect valuable aquatic resources.

